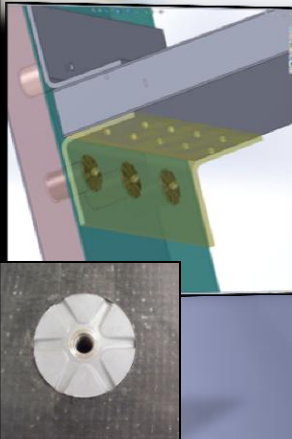


Materials Sciences Corporation
135 Rock Rd
Horsham, PA 19044
Ph: 215.542.8400
www.materials-sciences.com



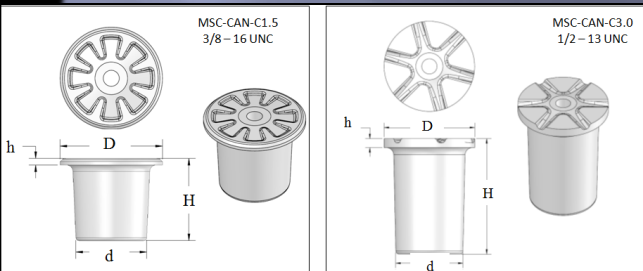
Materials Sciences Corporation (MSC)

COMPOSITE-ATTACHMENT-NAIL (MSC - CAN)

MSC-CAN is an innovative, high performance alternative to traditional metallic fasteners for attaching fixtures and equipment to composite sandwich structures.

Applications: Marine Structures, Vessels, Decks, Composite Joints

Specifications



	CAN-C1.5	CAN-C3.0
Bolt thread	3/8-16 UNC	1/2-13 UNC
Outer Diameter (D)	2.0"	2.5"
Total Height (H)	1.56"	3.20"
Facesheet height (h)	0.125"	0.25"
Inner Diameter (d)	1.36"	1.85"
Axial Carrying Load*	3200 lb	6000 lb

* Based on 9 pcf balsa core; actual strength depends on core material

Highlights

- More structurally sound than bonding pads, self-tapping screws, and through-bolting
- Unlike a threaded fastener that introduces stress into the face sheet of a sandwich, the insert introduces load directly to the core through shear in the form of a hollow insert
- The attachment is not a through-penetration, therefore, the sandwich panel remains sealed and all installation work can be accomplished from one side
- Compatible with standard room-temperature cure adhesives
- Constructed from glass fiber reinforced composite to provide a chemically inert non-corrosive barrier between metallic fasteners and graphite fiber composite facesheets